



watch



automobile



aerospace



medical



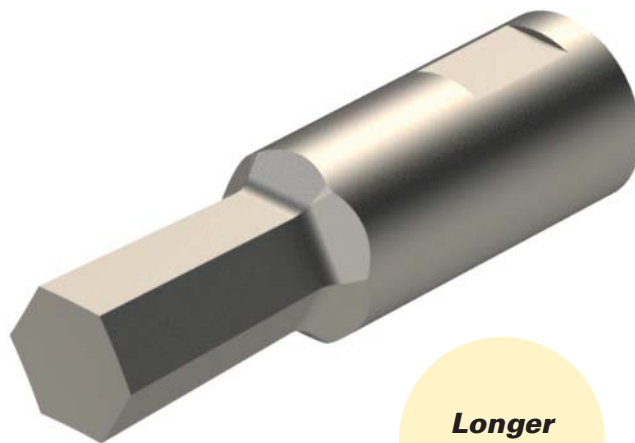
industry



# ***Carbide broaches***

- Longer lifetime
- Swiss Made Quality
- Hexagon maximum 6.9mm
- Square maximum 5.6mm

**NEW**



***Hexagonal  
or square  
shape***

***Ø 8mm***

***Longer  
lifetime***



watch



automobile



aerospace



medical



industry

Following several requests from our customers and the good results obtained during our tests, we decided to develop our range of broaches.

From today, you can order hard metal broaches with an  $\varnothing$  8mm attachment.

The complete list of articles can be found in the table opposite.

Maximum hex of 6.9mm.

Maximum square of 5.6mm.

S mm	mm	Article N° HSS	Article N° Carbide
1.538 ±0.007	1.5 D9	2110-1.5H	<b>2110-1.5C</b>
2.038 ±0.007	2 D9	2112H	<b>2112C</b>
2.553 ±0.007	2.5 D10	2112-5H	<b>2112-5C</b>
3.071 ±0.009	3 E11	2113H	<b>2113C</b>
4.086 ±0.009	4 E11	2114H	<b>2114C</b>
5.086 ±0.009	5 E11	2115H	<b>2115C</b>
6.084 ±0.009	6 E11	2116H	<b>2116C</b>
1.625 ±0.007	1/16» D9	2110-159H	<b>2110-159C</b>
2.022 ±0.007	5/64» D9	2110-198H	<b>2110-198C</b>
2.434 ±0.007	3/32» D10	2110-238H	<b>2110-238C</b>
2.851 ±0.007	7/64» E11	2110-278H	<b>2110-278C</b>
3.261 ±0.009	1/8» E11	2110-317H	<b>2110-317C</b>
4.054 ±0.009	5/32» E11	2110-397H	<b>2110-397C</b>
4.848 ±0.009	3/16» E11	2110-476H	<b>2110-476C</b>
5.642 ±0.009	7/32» E11	2110-556H	<b>2110-556C</b>
6.454 ±0.011	1/4» E11	2110-635H	<b>2110-635C</b>

**NEW**

